

Milesight

AI Motorized Pro Dome Network Camera

NDAA 

IP67 + IK10

Motorized Lens



DATASHEET

KEY FEATURES

- ▶ NDAA Compliance (The fully NDAA-compliant products are well suited for government, defense and a range of projects subject to the NDAA.)
- ▶ Smart IR II (Combining the High Beam and Low Beam to adjust IR intensity to fit different lighting conditions.)
- ▶ 120dB Super WDR (Excellent performance even when the ratio of the luminosity of brightest and darkest is up to 120dB.)
- ▶ Advanced Functions (Boasting to support various advanced functions such as HLC, ROI.)
- ▶ SIP (Session Initiation Protocol. Providing audio/alarm/intercom and video streaming for mobile phones and video phones.)
- ▶ 256G (Supporting ultra-large external microSD/SDHC/SDXC card storage up to 256G.)
- ▶ Smart Stream (Bandwidth, storage and bit rate are saved with Smart Stream On, eg, H.265+ saves 70%~80% bandwidth that of H.264.)

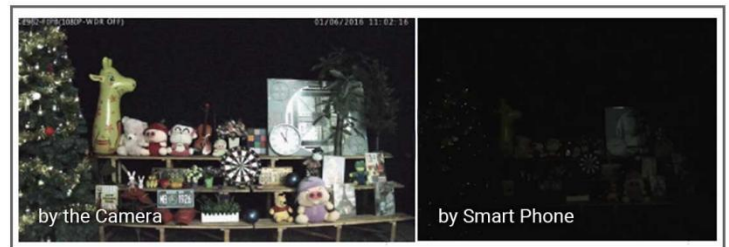
AI Video Analytics

- 8 intelligent VCA modes powered by AI engine, which can intelligently filter objects to focus on human and vehicle detection.
- People Counting technology provides high accuracy and real-time data based on AI algorithm with statistic reports.



0.002Lux Ultra Low-light

The starlight camera is able to deliver high detailed color images even in low light environment reaching 0.002Lux(Color) or 0Lux(B/W), and near infrared light environments without any supplementary lighting.



30fps@4K

Providing 4K HD resolution with frame rate of 30fps, the camera performs well in catching detailed image regardless of the moving speed.



Clamshell Design

Aiming to reduce the installation troubles to the least, the clamshell design is creatively introduced to the dome base. This revolutionary innovation enlarges the space to make cable connection a piece of cake, greatly saving efforts for installers.



AI Motorized Pro Dome Network Camera



| | Model | MS-C2872-R(T)F(I)PA (2MP) | MS-C2972-R(T)F(I)PA (2MP) | MS-C5372-F(I)PA (5MP) |
|---------------|--|--|---|--|
| Camera | Image Sensor | 1/2" Progressive Scan CMOS | 1/2.8" Progressive Scan CMOS | |
| | Min. Illumination | Color: 0.002Lux@F1.4 B/W: 0Lux with IR on | Color: 0.005Lux@F1.4 B/W: 0Lux with IR on | Color: 0.008Lux@F1.4 B/W: 0Lux with IR on |
| | WDR | 120dB Super WDR | | |
| | Shutter Time | 1/100000s~1s | | |
| | IR Distance | Up to 50m | Up to 50m(3.0~10.5mm/2.7~13.5mm) Up to 90m(7~22mm) | |
| | Day/Night Mode | Day/Night/Auto/Customize/Schedule | | |
| | S/N | >55dB | | |
| Lens | Lens | Motorized 3.6~10mm@F1.4 P-Iris(Optional) | Motorized 2.7~13.5mm/3.0~10.5mm/7~22mm@F1.4 P-Iris(Optional) | |
| | Field of View | H96°~H42°/D111°~D48°/V55°~V23° | H115°~H34°/D135°~D39° /V62°~V19° (2.7~13.5mm) H93°~H33°/D107°~D38° /V52°~V18° (3.0~10.5m) H40°~H16°/D46°~D19° /V23°~V9° (7~22mm) | H89°~H30°/D111°~D37° /V66°~V22° (2.7~13.5mm) H90°~H31°/D114°~D38° /V67°~V23°(3.0~10.5mm) H37°~H15°/D47°~D19° /V28°~V11° (7~22mm) |
| | Mount | Φ14 | | |
| | Focus Control | Auto/Manual | | |
| | Iris Control (Optional for I Series) | Auto/Manual | | |
| Video | Max. Image Resolution | 1920x1080 | | 2592x1944 |
| | Primary Stream | 60Hz: 90fps@(1920x1080)(Optional for T Series) , 60fps@(1920x1080, 1280x960, 1280x720, 704x576) 50Hz: 90fps@(1920x1080)(Optional for T Series) , 50fps@(1920x1080, 1280x960, 1280x720, 704x576) | | 60Hz: 30fps@(2592x1944, 2592x1520, 2048x1536, 1920x1080, 1280x960, 1280x720, 704x576) 50Hz: 25fps@(2592x1944, 2592x1520, 2048x1536, 1920x1080, 1280x960, 1280x720, 704x576) |
| | Secondary Stream | 60Hz: 90fps@(704x576)(Optional for T Series) , 60fps@(704x576, 640x480, 640x360, 352x288, 320x240) 50Hz: 90fps@(704x576)(Optional for T Series) , 50fps@(704x576, 640x480, 640x360, 352x288, 320x240) | | 60Hz: 30fps@(704x576, 640x480, 640x360, 352x288, 320x240) 50Hz: 25fps@(704x576, 640x480, 640x360, 352x288, 320x240) |
| | Tertiary Stream | 60Hz: 30fps@(1280x720, 704x576, 640x480, 640x360, 352x288, 320x240) 50Hz: 25fps@(1280x720, 704x576, 640x480, 640x360, 352x288, 320x240) | | |
| | Video Compression | H.265+/H.265(HEVC)/H.264+/H.264/MJPEG | | |
| | Video Bit Rate | 16Kbps~16Mbps(CBR/VBR Adjustable) | | |
| | Privacy Masking | Up to 24 areas | | |
| | ROI | Up to 8 areas | | |
| Image Setting | Brightness/Contrast/Saturation/Sharpness | | | |

AI Motorized Pro Dome Network Camera



| | | | | |
|------------------------------|------------------------|--|--------------------------------|--------------------------------|
| Interface | Ethernet | 1*RJ45 10M/100M Ethernet Port | | |
| | Audio I/O | Built-in Microphone and 1 Audio Output interface | | |
| | Alarm I/O | 1/1 | | |
| Network | Network Storage | NAS(Support NFS, SMB/CIFS), ANR | | |
| | Protocol | IPv4/IPv6, ARP, TCP, UDP, RTCP, RTP, RTSP, RTMP, HTTP, HTTPS, DNS, DDNS, DHCP, FTP, NTP, SMTP, SNMP, UPnP, Bonjour, SIP, PPPoE, VLAN, 802.1x, QoS, IGMP, ICMP, SSL | | |
| Audio | Audio Compression | G.711/AAC/G.722/G.726 | | |
| | Audio Sampling Rate | 8/16/32/44.1/48KHz | | |
| | Audio Bit Rate | 16~256kbps | | |
| | Two-way Audio | Support | | |
| Intelligent Analytics | Video Analysis | Region Entrance, Region Exiting, Advanced Motion Detection, Tamper Detection, Line Crossing, Loitering, Object Left, Object Removed | | |
| | People Counting&Report | Count the number of people entering or exiting, up to 4 detection areas for regional people counting | | |
| System | Storage | Support microSD/SDHC/SDXC Card Local Storage, up to 256G | | |
| | Advanced Function | Heat Map, BLC, HLC, 2D DNR, 3D DNR, AWB, IP Address Filtering, AGC, Anti-flicker, Corridor Mode, Deblur, Watermark | | |
| | SIP/VoIP Support | Yes, Voice & Video-over-IP | | |
| | Event Trigger | Motion Detection, Network Disconnection, Audio Alarm, External Input, etc. | | |
| | Event Action | FTP Upload, SMTP Upload, SD Card Record, External Output, SIP Phone, HTTP Notification, etc. | | |
| | System Compatibility | ONVIF Profile G & Q & S & T, API | | |
| General | Working Temperature | -40°C~60°C | | |
| | Working Humidity | 0~90%(Non-condensing) | | |
| | Power Supply | PoE (802.3af) / DC 12V±10% | | |
| | Power Consumption | 9W MAX 11W MAX (With IR on) | 8W MAX 11W MAX (With IR on) | 9W MAX 11W MAX (With IR on) |
| | Housing | Vandal-proof IK10-rated Metal Housing / Up to IP67-rated for Weather-resistant Performance | | |
| | Weight | 1100g | | |
| | Dimensions | Φ143mmX108.4mm | | |
| | Warranty | 3/5 Years | | |

AI Motorized Pro Dome Network Camera



| | Model | MS-C8172-F(I)PA (4K) | MS-C8272-F(I)PA (4K) |
|------------------|---|--|--|
| Camera | Image Sensor | 1/2.8" Progressive Scan CMOS | 1/1.8" Progressive Scan CMOS |
| | Min. Illumination | Color: 0.012Lux@F1.4 B/W: 0Lux with IR on | Color: 0.009Lux@F1.4 B/W: 0Lux with IR on |
| | WDR | 120dB Super WDR | |
| | Shutter Time | 1/100000s~1s | |
| | IR Distance | Up to 50m | |
| | Day/Night Mode | Day/Night/Auto/Customize/Schedule | |
| | S/N | >55dB | |
| Lens | Lens | Motorized 2.7~13.5mm@F1.4 P-Iris(Optional) | Motorized 3.6~10mm@F1.4 P-Iris(Optional) |
| | Field of View | H96°~H33°/D112°~D37°/V53°~V18° | H110°~H46°/D126°~D54°/V61°~V25° |
| | Mount | Ø14 | |
| | Focus Control | Auto/Manual | |
| | Iris Control (Optional for I Series) | Auto/Manual | |
| Video | Max. Image Resolution | 3840x2160 | |
| | Primary Stream | 60Hz: 30fps@(3840x2160, 3072x2048, 2592x1944, 2592x1520, 2048x1536, 1920x1080, 1280x960, 1280x720, 704x576) 50Hz: 25fps@(3840x2160, 3072x2048, 2592x1944, 2592x1520, 2048x1536, 1920x1080, 1280x960, 1280x720, 704x576) | |
| | Secondary Stream | 60Hz: 30fps@(704x576, 640x480, 640x360, 352x288, 320x240) 50Hz: 25fps@(704x576, 640x480, 640x360, 352x288, 320x240) | |
| | Tertiary Stream | 60Hz: 30fps@(1280x720, 704x576, 640x480, 640x360, 352x288, 320x240) 50Hz: 25fps@(1280x720, 704x576, 640x480, 640x360, 352x288, 320x240) | |
| | Video Compression | H.265+/H.265(HEVC)/H.264+/H.264/MJPEG | |
| | Video Bit Rate | 16Kbps~16Mbps(CBR/VBR Adjustable) | |
| | Privacy Masking | Up to 24 areas | |
| | ROI | Up to 8 areas | |
| | Image Setting | Brightness/Contrast/Saturation/Sharpness | |
| Interface | Ethernet | 1*RJ45 10M/100M Ethernet Port | |
| | Audio I/O | Built-in Microphone and 1 Audio Output interface | |
| | Alarm I/O | 1/1 | |

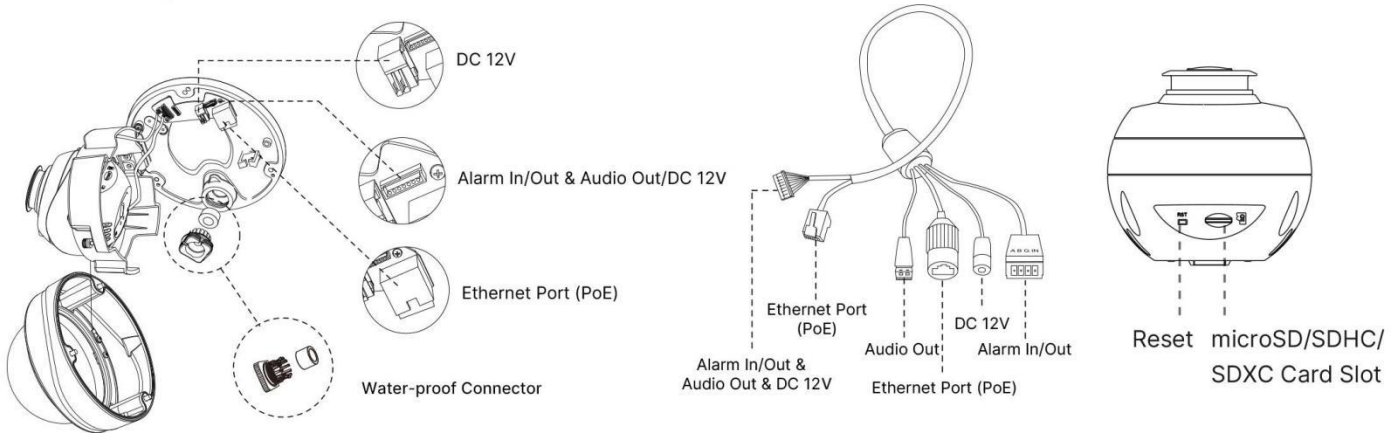
AI Motorized Pro Dome Network Camera



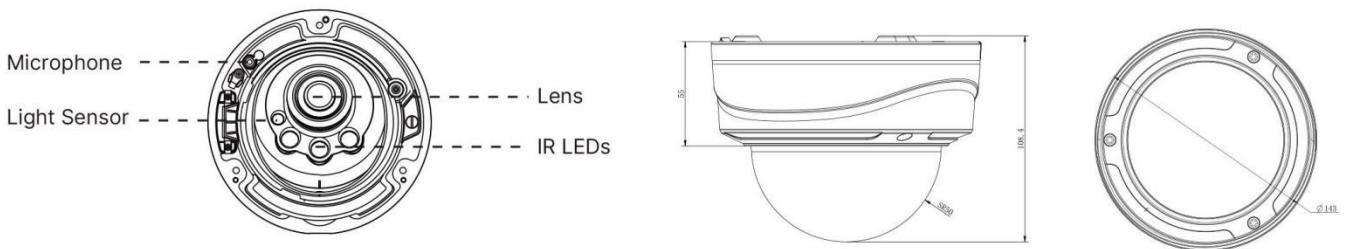
| | | |
|------------------------------|-------------------------|--|
| Network | Network Storage | NAS(Support NFS, SMB/CIFS), ANR |
| | Protocol | IPv4/IPv6, ARP, TCP, UDP, RTCP, RTP, RTSP, RTMP, HTTP, HTTPS, DNS, DDNS, DHCP, FTP, NTP, SMTP, SNMP, UPnP, Bonjour, SIP, PPPoE, VLAN, 802.1x, QoS, IGMP, ICMP, SSL |
| Audio | Audio Compression | G.711/AAC/G.722/G.726 |
| | Audio Sampling Rate | 8/16/32/44.1/48KHz |
| | Audio Bit Rate | 16~256kbps |
| | Two-way Audio | Support |
| Intelligent Analytics | Video Analysis | Region Entrance, Region Exiting, Advanced Motion Detection, Tamper Detection, Line Crossing, Loitering, Object Left, Object Removed |
| | People Counting& Report | Count the number of people entering or exiting, up to 4 detection areas for regional people counting |
| System | Storage | Support microSD/SDHC/SDXC Card Local Storage, up to 256G |
| | Advanced Function | Heat Map, BLC, HLC, 2D DNR, 3D DNR, AWB, IP Address Filtering, AGC, Anti-flicker, Corridor Mode, Deblur, Watermark |
| | SIP/VoIP Support | Yes, Voice & Video-over-IP |
| | Event Trigger | Motion Detection, Network Disconnection, Audio Alarm, External Input, etc. |
| | Event Action | FTP Upload, SMTP Upload, SD Card Record, External Output, SIP Phone, HTTP Notification, etc. |
| | System Compatibility | ONVIF Profile G & Q & S & T, API |
| General | Working Temperature | -40°C~60°C |
| | Working Humidity | 0~90%(Non-condensing) |
| | Power Supply | PoE (802.3af) / DC 12V±10% |
| | Power Consumption | 9W MAX 12W MAX (With IR on) |
| | Housing | Vandal-proof IK10-rated Metal Housing / Up to IP67-rated for Weather-resistant Performance |
| | Weight | 1100g |
| | Dimensions | Ø143mmX108.4mm |
| | Warranty | 3/5 Years |



Structure Diagrams



Note: The cable is connected with the interface board by default.



Accessories Support

A01 Pole Mount

Weight: 720g
Dimensions: 170*51.5*152.6mm



A03 External Corner Bracket

Weight: 900g
Dimensions: 170*152.5*76.3mm



A72 Wall Mount

Weight: 560g
Dimensions: 240*160*136mm



AC-72 Smoked Dome Cover

For concealing where a camera is pointed



A75 Junction Box

Weight: 200g
Dimensions: 145*167*33.5mm



A76 Pendant Mount

Weight: 620g
Dimensions: 136*L (L is default as 300mm, also can be extended with A76-L)



A76-L Extension Lever

Weight: 315g
Dimensions: 34*300mm



A78 Recessed Mount

Weight: 715g
Dimensions: 256*256*94mm

