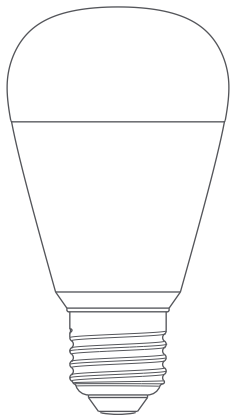


Aqara



LED Bulb T2 User Manual **EN**

Product Introduction

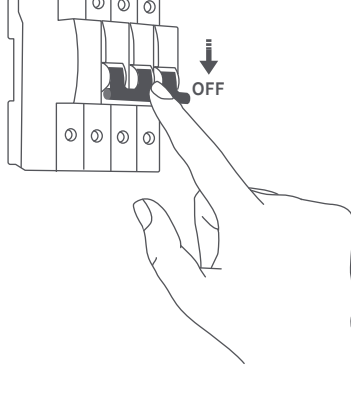
The LED Bulb T2 is a smart bulb that offers versatile dual-protocol support, seamlessly bridging Zigbee and Thread to meet diverse user needs. In Zigbee mode*, users can access exclusive Aqara features and Matter compatibility via an Aqara hub. In Thread mode**, the bulb integrates directly with Matter-enabled ecosystems, including Apple Home, Google Home, and Alexa, providing robust, low-latency connectivity. The T2 adapts effortlessly to your smart home setup, whether you prefer Aqara's unique features or the broad connectivity of Thread.

* To use in Zigbee mode with Aqara Home, a compatible Aqara hub is required.

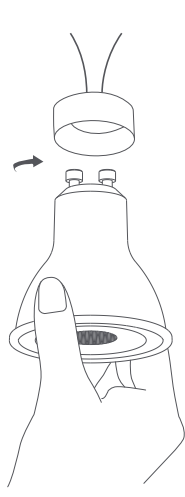
** To use the device with a particular Matter ecosystem, a Matter Controller and Thread Border Router of this ecosystem is required.

Device Installation

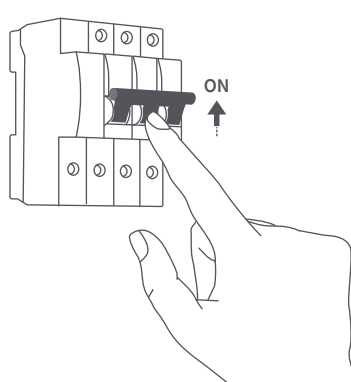
1. Before installing the light bulb, make sure to turn off the main power supply or switch off the power to the lighting fixture where the bulb will be installed.



2. Hold the bulb firmly and align its base with the socket. Rotate the bulb clockwise to secure it. After installation, check the stability of the fixture to ensure it is secure and won't topple.



3. Once the power supply is restored or the light fixture is switched on, the bulb will go through two breathing cycles (fading in and out) before staying on at a constant brightness, indicating it has entered pairing mode.



Device Binding & Initialization

Download the Aqara Home app

Search for "Aqara Home" in the Apple App Store, Google Play, Xiaomi GetApps, Huawei App Gallery, or scan the following QR code to download the Aqara Home app:



To use the device with a particular Matter ecosystem (Thread Mode), a Matter Controller and Thread Border Router of this ecosystem is required:

1. Power on the bulb, and it will complete two breathing cycles (fading in and out) before remaining on at a constant brightness, indicating it has automatically entered pairing mode.
2. Open the Matter-compatible app, scan the Matter code from the manual or product, or enter the setup code to add the device to the app.
3. Proceed following the app's instruction.

To use the device in Aqara Home (Thread Mode), an Aqara Hub with border router function (for example, Hub M3) is required:

1. Power on the bulb, and it will complete two breathing cycles (fading in and out) before remaining on at a constant brightness, indicating it has automatically entered pairing mode.
2. In the Aqara Home app, tap "Add Accessory" and select "LED Bulb T2." Keep your phone close to the device, and the bulb should appear in the app's discovery section. If the device is not found, scan the Matter code from the manual or product, or enter the setup code to add the device to the app.
3. Proceed following the app's instruction.

To use the device in Aqara Home (Zigbee Mode), an Aqara Zigbee Hub is required:

1. Power on the bulb, and it will complete two breathing cycles (fading in and out) before remaining on at a constant brightness, indicating it has automatically entered pairing mode.
2. In the Aqara Home app, tap Add Accessory, keep the phone close to the device, and LED Bulb T2 will show in the app's discovery section. If the device is not found, scan the Matter code from the manual or product, or enter the setup code to add the device to the app. Then tap "Switch Protocol" and select "Zigbee protocol." Note that the device defaults to Thread protocol, and switching to Zigbee may take a few minutes.
3. Proceed following the app's instruction.

* Use of the Works with Apple badge means that an accessory has been designed to work specifically with the technology identified in the badge and has been certified by the developer to meet Apple's performance standards. Apple is not responsible for the operation of this device or its compliance with safety and regulatory standards.

How to Switch Protocol:

To switch protocols, you can either remove the device in the Aqara Home app or turn the device off and on 5 times to reset it. Then, repeat the pairing process, and on the device pairing screen, tap "Switch Protocol" and select the desired protocol. Follow the app's instructions to complete the setup.

Note: Switching protocols is equivalent to restoring factory settings, and will erase all settings and data.

Reset the device:

Actions	Results
Turn the device off and on 5 times, with a 1-second pause in between.	Reset: Only clears the network pairing, without deleting other settings and records.
Turn the device off and on 10 times, with a 1-second pause in between.	Factory Reset: Restores the device to its original settings, clearing all configurations and data.

Product Specifications

Product Name	LED Bulb T2 (GU10, CCT)	LED Bulb T2 (GU10, RGB CCT)
Model	LB-L03E	LB-L03D
Wireless Protocols	Thread, Zigbee, Bluetooth	
Rated Power	4.9W	
Rated Parameters	100 - 240 V~, 50/60 Hz	
Dimensions	50 × 54 mm (1.97 × 2.13 in.)	
Operating Temperature	-10 °C ~ 40 °C (14 °F ~ 104 °F)	
Operating Humidity	0 ~ 95% RH, no condensation	
What is in the Box	LED Bulb T2 × 1, User Manual	

Manufacturer: Lumi United Technology Co., Ltd.

Address: Room 801-804, Building 1, Chongwen Park, Nanshan

iPark, No. 3370, Liuxian Avenue, Fuguang Community, Taoyuan

Residential District, Nanshan District, Shenzhen, China.

Email: support@aqara.com

Online Customer Service: www.aqara.com/support