

# Home Center

— *Live* —



Home Center

— *Live* —

*Thank You*  
for purchasing **Home Center** *Live*

## Instructions

- PL** Dbając o ekologię, wydrukowaliśmy niniejszą instrukcję tylko w wersji angielskiej. Inne wersje językowe dostępne są na naszej stronie w dziale wsparcie.  
<http://www.fibaro.com/pl/wsparcie-techniczne>
- EN** Considering the environment protection we have printed this Quick Manual in English only. Other language versions are available for download from our web site, in Support section.  
<http://www.fibaro.com/en/support>
- SE** Med tanke på miljön har vi endast tryckt bruksanvisningen på engelska. Andra språkversioner finns tillgängliga för nedladdning via vår hemsida, under sektionen "support".  
<http://www.fibaro.com/se/support>
- FR** Afin de protéger l'environnement, nous avons imprimé le manuel d'utilisation en Anglais seulement. Des versions dans d'autres langues sont disponibles en téléchargement à partir de notre site web, dans la section Support. <http://www.fibaro.com/fr/support-technique>
- DE** Unserer Umwelt zuliebe haben wir auf ein mehrsprachiges Benutzerhandbuch verzichtet. Das englische Handbuch liegt bei. Alle weiteren Sprachen stehen Ihnen im Supportbereich unserer Homepage zum Download zur Verfügung.  
<http://www.fibaro.com/de/unterstutzen>

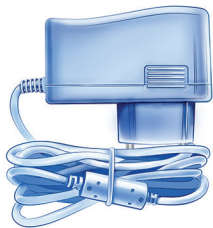
## Support

Should you require help configuring Home Center Lite, use tutorials and technical presentations which can be found at [www.fibaro.com](http://www.fibaro.com). Should you need a professional to configure Home Center Lite for you, contact a closest certified Fibaro installer. List of certified Fibaro installers can be found at [www.fibaro.com](http://www.fibaro.com)

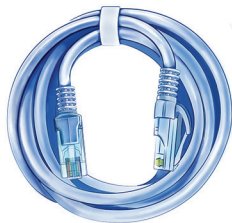
### Note:

Some of the Fibaro System components installation may involve mains voltage connection. It can be dangerous. If you are not sure how to install the devices, use a certified installer's services.

## Contents



AC/DC Adapter



Network Cable



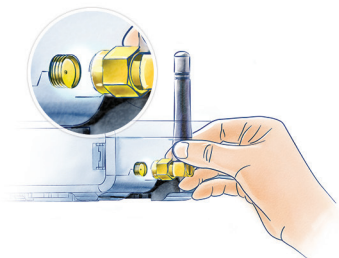
Antenna



Home Center Lite

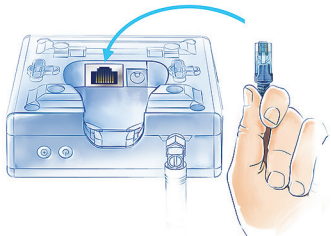
## 1. Connect antenna

Start from connecting the antenna, turning the mounting screw clockwise.



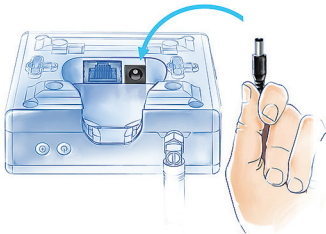
## 2. Connect ethernet cable

Using the included ethernet cable, connect Home Center Lite's LAN port to a router in order to connect the controller to internet.



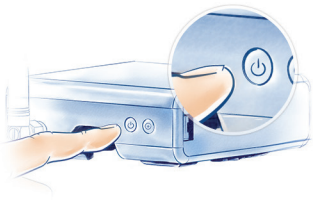
## 3. Connect power adapter

Connect the included power adapter to Home Center Lite and plug it to the main socket.



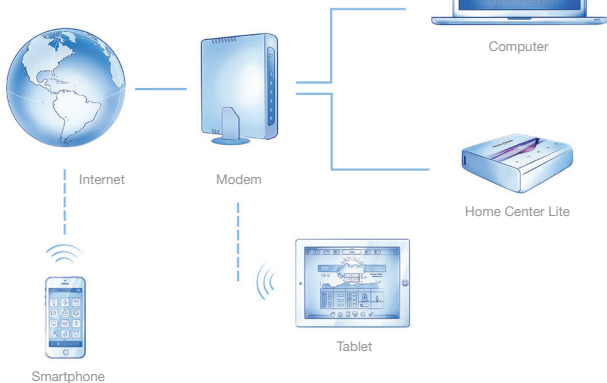
## 4. Turn on Home Center Lite

Press the POWER button briefly. Your Home Center Lite will be ready to work in a second.



## Your Local Network

Connect your Home Center Lite with a router using the included LAN cable and start the controller. From now on Home Center Lite will be visible to all devices within your local area network (LAN).



## Remote Access

By default the Home Center Lite is visible only within your local network. To enable remote access, from outside of your local network, configure a [home.fibaro.com](http://home.fibaro.com) account as described further in this manual.

## Create Intelligent Home

Home Center Lite is set to DHCP client mode by default. To find its IP within your local network, download a Fibaro Finder application, in a version appropriate for your operating system, using the links on the right.

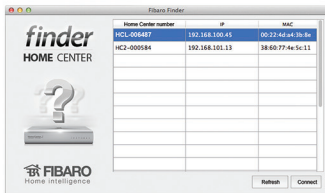


[www.fibaro.com/finder-win](http://www.fibaro.com/finder-win)

[www.fibaro.com/finder-os](http://www.fibaro.com/finder-os)



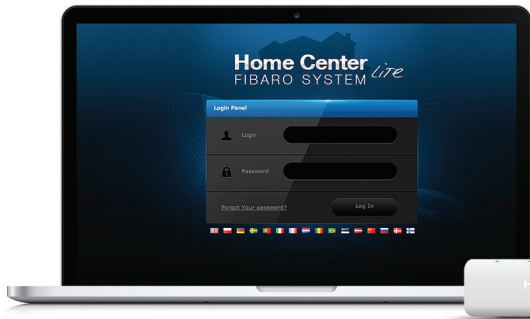
1



### Find Home Center Lite

To determine a Home Center Lite IP, go to [www.fibaro.com](http://www.fibaro.com) and download Fibaro Finder application. Log in to Home Center Lite. Install and run Fibaro Finder. Click REFRESH to see Home Center Lite's IP within your local network.

2



### Login panel

After successful connection you will access HC Lite control panel. Choose your language version, enter user name and password. Defaults are:  
Login: admin  
Password: admin

3

## Create Rooms

When setting up your intelligent home start with creating rooms in HCL menu to reflect the layout of your home in it.



### Create Section

### Create sections

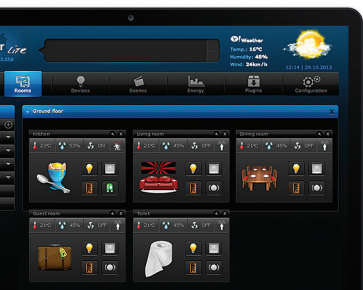
Section is a group of rooms in your home. Section may be whole floor or a few rooms.



### Add Room

### Add a room

Name the room and then choose the section to which you would like to add it.



### Change an icon

Each room can be represented by the unique icon. You can change the icons in the advanced room's settings.

1

2

3

4

## Add devices

After creating the rooms you can start adding the devices.

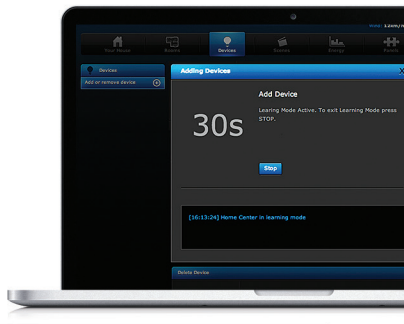


Click Devices in the main menu screen. Find and click ADD button to start adding devices (learning mode) on the left-hand menu.



The menu will count down the time (30 sec by default) for you to add a new device to the Z-Wave network (inclusion).

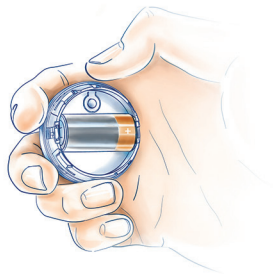
Note that the device needs to be located within direct range of the Home Center Lite during the inclusion process.



Please refer to each device's manual for further information on how to include it into the Z-Wave network.

### NOTE:

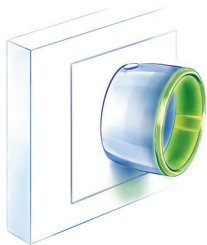
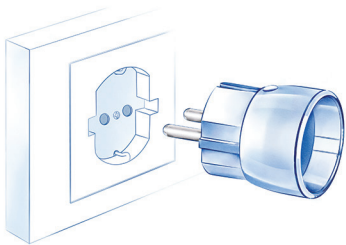
Danger of electrocution! If you are not sure how to connect a device to the wires, please contact a qualified installer.





## Wall plug

FIBARO Wall Plug with power metering feature is an intelligent, ultimate plug & play, extremely compact, remotely controlled outlet adapter. This highly functional wall plug can be applied wherever you want to control electrical devices (max permissible load 2,5kW), while monitoring power consumption in a convenient and maintenance-free way.



projector



coffee



television



iron



lamp

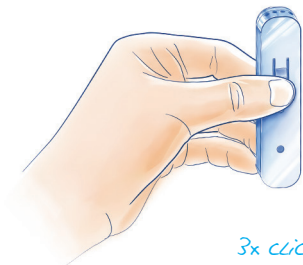


more information

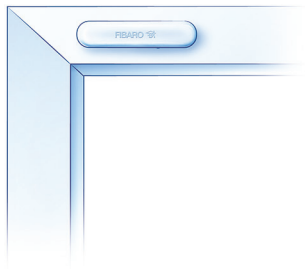
## Door/Window Sensor

is a compact sensor used for monitoring the status of doors, windows, garage gates and such. The sensor is available in seven colour versions to match your interior design.

The Door/Window Sensor is best used to control lights and as a component of access control and security systems.



*3x clicks*



door



windows



roof window



garage



gate



more information

## Smoke Sensor

The sensor immediately detects smoke or high temperature and warns about discovered threat with sound and LED illumination. The sensor can be battery operated or hard wired (12 or 24 VDC) and can be integrated with almost any wired alarm system. Built-in „black-box” allows the device to report and record smoke and temperature readouts. Additional device features are automatic, wireless software update, and the Z-Wave network range detection.



RGB LED



temp sensor



sensitiveness



black box

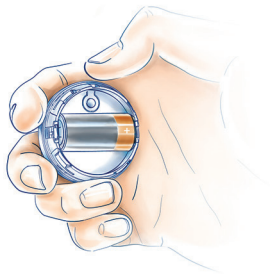
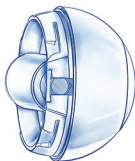


more information

## Motion Sensor

Motion Sensor is a miniature, advanced multi-sensor detecting: motion, temperature level, light intensity, changes in device position and an earthquake.

The sensor design was inspired by the cat's eye and thus it has the wide angle of view, high detection range and is ultra sensitive. Additional devices features are automatic, wireless software update, and the Z-Wave network range detection.



light sensor



motion sensor



temp sensor



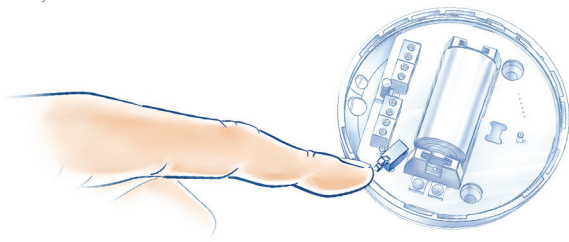
accelerometer



more information

## Flood Sensor

Flood Sensor is a universal, Z-Wave compatible, water and temperature sensor. Can be battery or VDC powered (12/24 VDC). The device has built in LED indicator and acoustic alarm, and is also equipped with a dual tamper protection, which detect any movement or relocation. It has a built-in Z-Wave network range tester and can update automatically.



flood sensor



tilt sensor



temp sensor



Telescopic probe



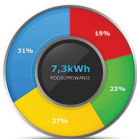
more information

## Power Monitoring

Monitor the current energy consumption and the power consumption history within the configuration interface of HCL. Detailed statistics presented as extremely intuitive, clear charts, give you the opportunity to control and effectively plan energy consumption costs.



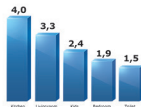
Current



Pie chart



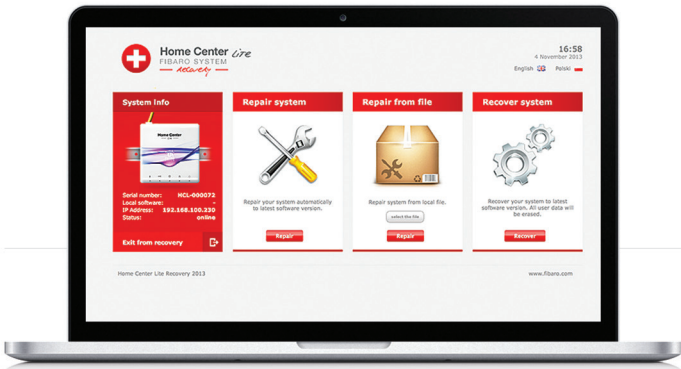
Charts



TOP 5

## Recovery

Recovery is the panel dedicated to retrieving the controller's system or re-installing it in case of any problems. In case of a system breakdown you can fix it by getting back to the last stable version of the system, while retaining configuration settings. You can also choose to get back to factory settings. When you are not able to connect to the internet, choose repair from file option and the system will be re-installed without deleting the previously saved settings.



Repair  
system



Repair  
from file



Recover  
system

## LED diodes

located on the front panel of the Home Center Lite enclosure have the following purpose:



### Power

Glowes when the power supply is on.



### Z-Wave

Glowes when the HCL is connected to the local network.



### Ethernet

Glowes when the HCL is connected to the internet.



### Lan Network

Blinks when the HCL sends commands to the Z-Wave network devices.



### Learn mode

Glowes when a software update is available.