

Aqara Camera Hub G3 Introduction

Product Introduction

Aqara

Aqara Camera Hub G3

The Camera Hub G3 is a pan and tilt (PT) surveillance camera, which integrates the hub function of the new generation of Zigbee and supports 2K 1296p video. With the built-in NPU (neural network computing unit), it supports rich AI facial recognition functions, as well as HomeKit Secure Video. With automatic PT function, it supports fixed position setting, video cruise path planning, power-off memory, and other functions, and allows learning and replacing the remote control of various household appliances through the embedded infrared remote control module, which is a new generation of integrated hub camera product for home security and intelligent control for Aqara.



continuous connection

What's In The Box



Aqara Smart Camera
G3 (Hub)



User's manual



Power adapter



USB power cable

Application Scenario

Security monitoring and intelligent control in indoor environments such as home, store, classroom and office.



Home



Store



study room



Office

Privacy Protection

Aqara



In sleep mode, the camera automatically retracts the lens to the top, physical masking the lens for all-around privacy protection.

continuous connection

2K Video, Automatic Pan and Tilt, 360° Guarding

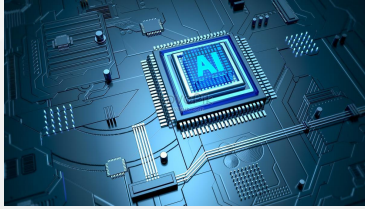
Aqara



continuous connection

AI Facial & Event Recognition and Automation Scene

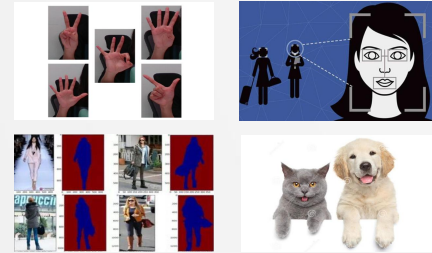
The chip with super computing power enables the AI face and event recognition functions, which makes the camera both an intelligent control hub and a super security guard



Independent NPU



Supports a variety of AI control scene settings and gesture customization



Gesture, face, human shape, and pet recognition



AI security alarm of intrusion and reduce property damage

Smart Home Control Center for Various Zigbee Devices



IR Remote Control and Video Surveillance



It helps you to look after your kid when he/she is alone in the room or during sleep, check and control the room temperature, control the TV and other electrical appliances, and talk via audio call function

Pan and Tilt Function

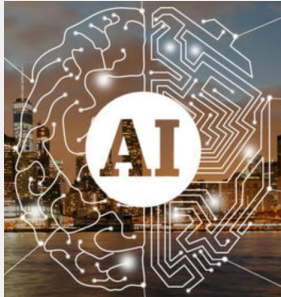
Aqara



1. Supports settings of frequently viewed locations and one press to quickly locate the monitoring area.
2. Supports setting multiple video cruise paths for regular monitoring without blind spots.
3. Supports intelligent tracking of human and pet, so that the monitoring object is always the focus of the screen.
4. Working with other smart devices such as the Door and Window Sensor, the camera can turn to the door with the pan and tilt function.

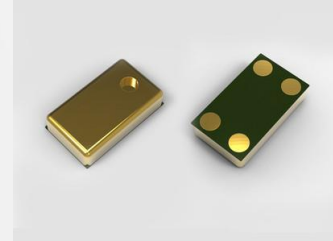
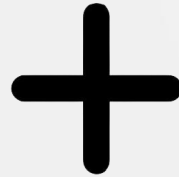
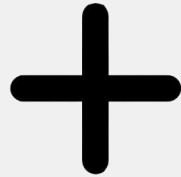
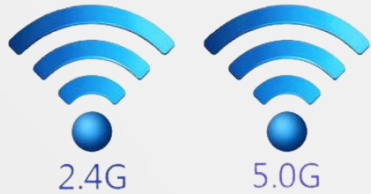
continuous connection

OTA Remote Upgrade of Built-in Algorithm



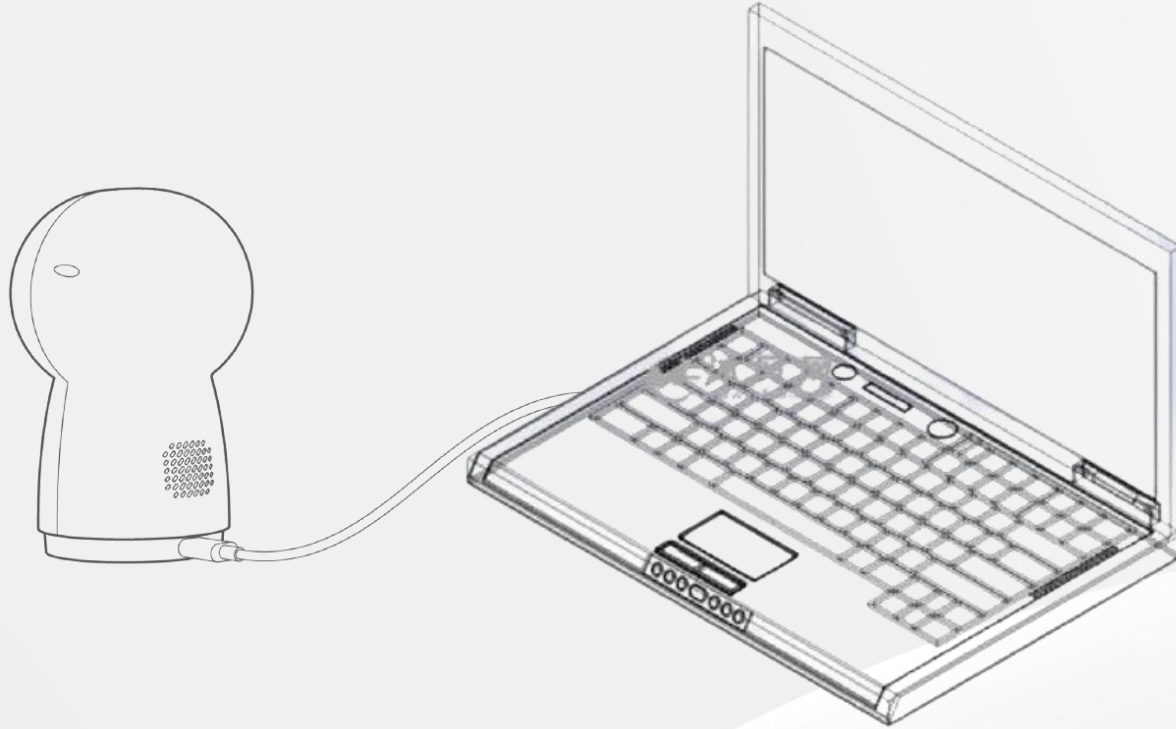
The remote upgrade of the algorithm model ensures that your camera is always equipped with the latest technology.

Dual-band WiFi + Dual MEMS Microphones



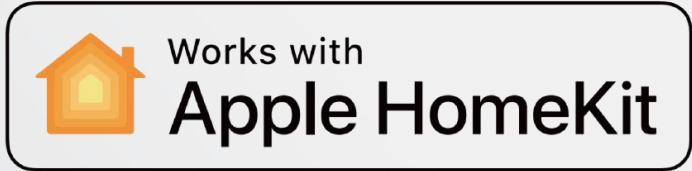
Dual-band WiFi ensures more stable connection;
Dual MEMS microphones audio pickup design provides wider
monitoring range, and clearer sound

UVC Protocol Support



With built-in UVC protocol, users can connect the camera to PC through the Type-C port and play videos directly on the player that supports UVC decoding

HomeKit Secure Video



Compatible with Apple HomeKit app
and supports HomeKit Secure Video

Optional Accessories



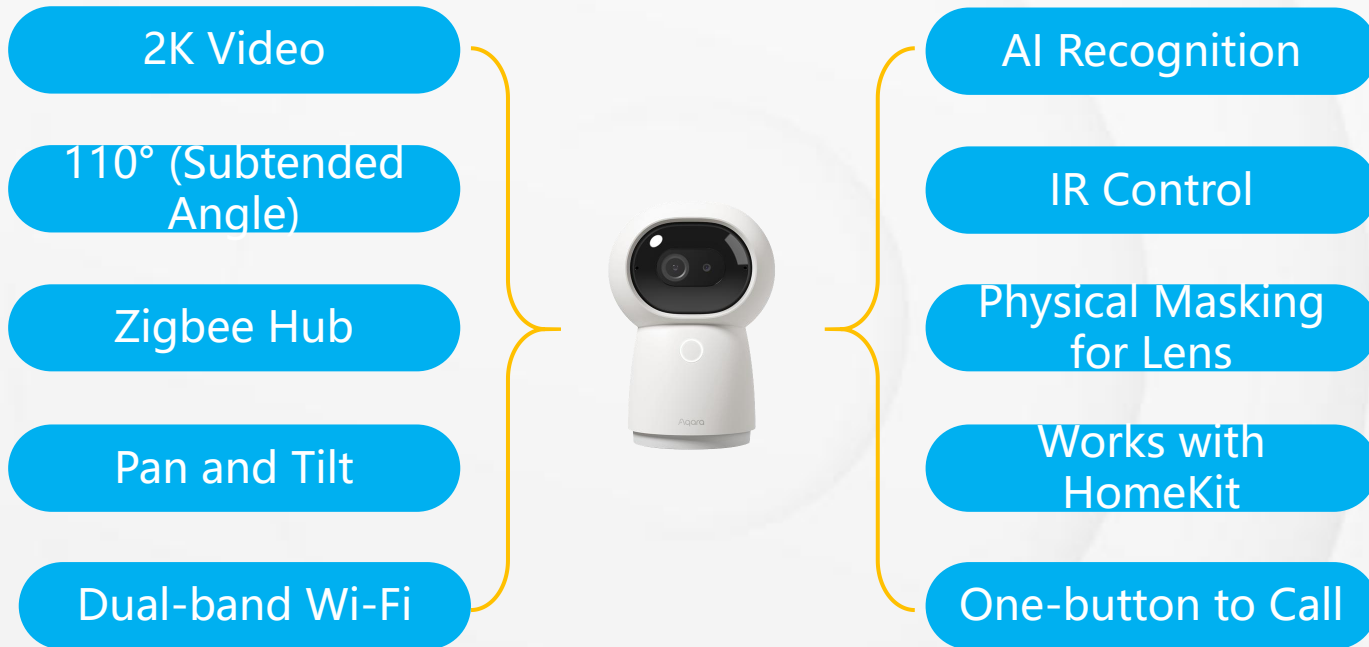
Optional decorative accessories of silicone rubber in cartoon cat shape are available

Installation Methods



With optional brackets, the camera can be installed by wall mounting or lifting

Selling Point



Specifications

Aqara

SOC	Cortex A7 1.2GHz dual-core processor (including an 0.5T independent NPU)
Image sensor	1/2.8", 2K pixel, CMOS
Flash	256MB Nand SPI
DDR	2Gb (built-in SOC)
Zigbee chip	MG21
FOV	110° (subtended angle)
Focus Distance	3.6mm
Aperture Value(F)	F2.0
Photoresistance	0-3lux night vision & 5-8 lux day vision
Infrared lamp	Eight 940nm infrared lamps
Microphone	Two MEMS microphones with 38dB sensitivity and 64dB SNR
Speaker	4Ω2W
Wireless connection	2.4/5GHz dual-band, IEEE 802.11b/g/n/a/ac Wi-Fi & Zigbee 3.0
Pan and Tilt rotation angle	Horizontal 340°, vertical 45°(upward 30°, downward 15°)
Hardware interface	Type-C interface for power input (and data transmission)
Memory card	Supports MicroSD cards of up to 128GB
Button	One function button
Indicator	RGB tricolor light
Power input	5VDC/2A
Bracket type	A 1/4 inch diameter nut hole reserved
Encode	H.264
Resolution	1296P@20fps/720P@20fps/VGA@20fps (adjustable)
Audio	2-way audio
Network configuration	Scan the QR code for network configuration

Infrared remote control	Maximum emission distance: 20m; maximum infrared learning distance: 2m
One-button alarm	Long press the function button for 3 seconds to push the alarm notification to the app
Motion detection	Supports motion detection (high, medium and low sensitivity)
Cry detection	Supports detection of infant cry
Gesture recognition	Supports 5 groups of static gesture recognition
Face recognition	Supports face detection and recognition
Human shape detection	Supports human shape detection
Pet recognition	Supports recognition of cats and dogs
Intelligent tracking	Supports tracking of moving human and pets
Concerned position	Up to 30 concerned positions
Cruise	Up to 5 cruise routes
Video recording	Supports event-triggering 12-second cloud recording and local memory card recording
Screen shot	Support
Video playback	Supports video playback from Aqara Home APP
Night vision	Supports automatic switching of infrared filters by photoresistance
Firmware upgrade	Supports OTA remote updating
Third-party platform access	Supports HomeKit platform
APP	iOS and Android
Certification	CE,FCC,IC,UKCA,EAC, RoHS
Operating temperature	-10°C~ +40°C
Product dimension	123.4×85.1×67.8mm
Net weight	251g
Installation	Supports horizontal laying, wall mounting and lifting
Packing List	Camera Hub G3×1, power adapter×1, power cable×1, manual×1

Thank You