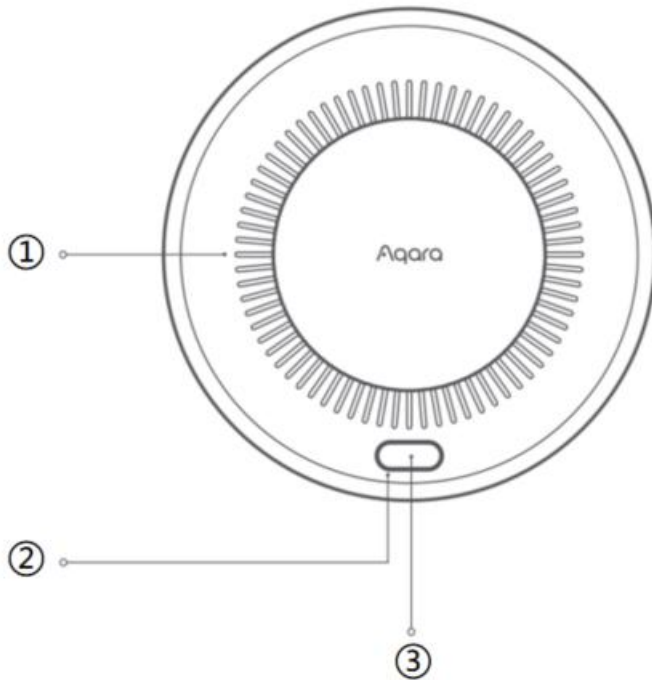


## Product Introduction

Aqara Smoke Detector is a fully autonomous photoelectric smoke detection alarm designed to detect fires by sensing smoke. When the concentration of smoke reaches the configured threshold value, the detector will promptly emit a sound and light alarm signal. Additionally, it can send a notification to the app through the hub. It is crucial for you to remain vigilant and take immediate and effective measures to address the danger, thereby preventing severe fire accidents.

\*An Aqara Zigbee 3.0 hub is required.

\*To work with Apple HomeKit, a compatible Aqara hub is required. Please see [www.aqara.com/support](http://www.aqara.com/support) for more information.



① Buzzer Sound Output

② Indicator (Red/Yellow/Green)

③ Silence/Self-Test Button

④ Rest: Press quickly for three times

Silence: Press once (in case of alarm)

Self-Test: Press and hold for over 3 seconds

Communication Distance Test: Press once

\* Reset: Press quickly for three times, the smoke detector green light blinks 3 times to indicate that the device is ready to be connected. Users can add their devices to the Aqara Home app.

\* Communication Distance Test: Press once the silence/self-test button, the hub will emit a sound, which means that the communication between the Smoke Detector and the hub is normal.

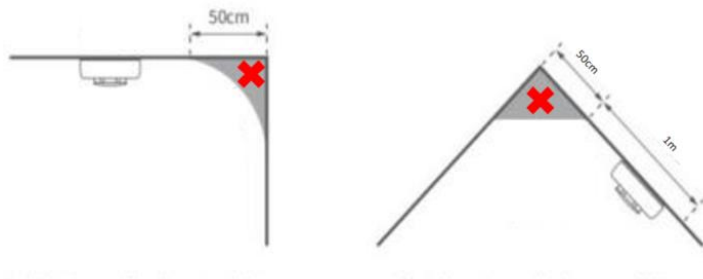
## Quick Setup

1. Before activating the device, please make sure you have the Aqara Home app downloaded and an Aqara Zigbee 3.0 hub installed.
2. Properly install the battery into the battery compartment.
3. Please open the app, tap “Home” and then tap “+” in the top right corner to enter the “Add Device (Accessory)” page. Select “Smoke Detector” and select the hub you wish to access. Press 3 times consecutively, then the sensor emits the sound of 3 ticks, at this point the sensor will be paired with the hub. When pairing is complete, users can configure product information on the app (e.g., naming, scenes, and other information). Also users can add it according to instructions from the Aqara Home app.
4. Please see [www.aqara.com/support](http://www.aqara.com/support) for additional information.

\*If adding fails, please move the product closer to the hub and try again.

## Installation Instructions

1. At least one detector should be installed in each independent room.
2. The detector should be installed in the middle of the ceiling, with at least 0.5 meters away from any wall.
3. The detector should not be installed in the kitchen or near the water heater with combustible smoke particles.
4. The detector should not be installed in places with massive moisture or large amount of water vapor, such as bathrooms.
5. The detector should not be installed in places with too much dust.
6. The detector should not be installed near the fans, air conditioners, fresh air entrances and exits where the wind speed is too fast.
7. The detector should not be installed in the corner of a wall or at the top of a room with poor air flow.
8. The detector should not be installed near fluorescent lamps with electromagnetic interference.
9. The detector should not be installed in places with temperature below 0°C or above 40°C.
10. The detector should be installed horizontally. If slanting installation is unavoidable, the tilt angle should not exceed 45 degrees.
11. Do not install the detector in new buildings until renovations and other processes that may generate dust have been completed.
12. If in exceptional circumstances it is not possible to mount on the ceiling (e.g. the ceiling is not strong enough), the smoke alarm should be mounted sideways on the wall, preferably on the longer wall of the room, 0.5 m from the ceiling.



## Installation

### Wrong position

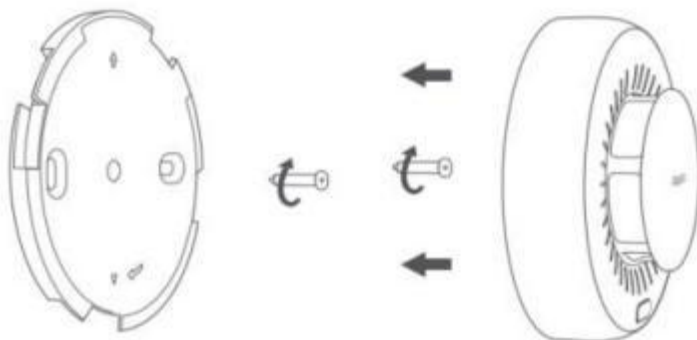
#### Any position in area

Before installing and securing the detector in its intended position, please follow these steps:

1. Place the detector in the desired installation location.
2. Insert the batteries into the detector.
3. Press the silence/self-test button to verify the communication distance.
4. Ensure that the device establishes proper communication with the hub.

### Installation with screws

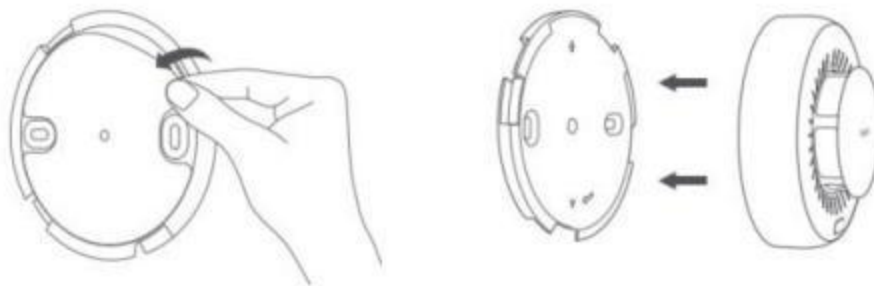
1. After loading the battery, hold down the silence/self-test button for more than 3 seconds to confirm that the indicator flashes red, yellow and green in turn, with three beeps of the buzzer, which indicates that the self-test is normal.
2. Choose a suitable position in the middle of the roof and use an impact drill to punch holes in accordance with the holes on the mounting plate.
3. Install the expansion tube at the punch position.
4. Secure the mounting plate with self-tapping screws.
5. Align the "Δ" mark on the back of the detector with the same mark on the mounting plate, and rotate clockwise to fix it.
6. Use screws first to ensure a more secure installation.



### Installation with adhesive

1. After loading the battery, hold down the silence/self-test button for more than 3 seconds to confirm that the indicator flashes red, yellow and green in turn, with three beeps of the buzzer, which indicates that the self-test is normal.
2. Remove the protective film on one side of the adhesive sticker, and stick the adhesive sticker on the back of the mounting plate.

3. Choose a suitable position in the middle of the roof and make sure the surface is smooth, clean and dry. Please do not stick the mounting plate on the surface of the wall paint and other coatings, otherwise the sticking position is prone to peeling after a period of time, resulting in falling off of the detector.
4. Remove the protective layer on the other side of the adhesive sticker, stick the mounting plate, and press with uniform force for 30 seconds to make it firm (it is recommended to leave it still for 24 hours before installing the detector).
5. Align the "Δ" mark on the back of the detector with the same mark on the mounting plate, and rotate clockwise to fix it.



### Status signal of the detector

The detector is equipped with a wireless networking interface, which can output the following status signals.

Status	Indicator	Buzzer	App
Normal monitoring	No Light (Green light blinks every 56 seconds after the power indicator is turned on)	No sound	Monitoring normal
Self-test	The red, yellow and green colors flash in turn, with duration of each flash one second and a pause every three flashes	One beep per second, with a pause every three beeps	Self-test
Fire alarm	Red light flashes once per second	One beep per second, with a pause every three beeps	Fire alarm
Linkage alarm	Red light flashes once every 4 seconds	One beep per second, with a pause every three beeps	Linkage alarm
Fault	Yellow light flashes three times every 48 seconds	Three beeps every 48 seconds	Fault
Low battery	Yellow light flashes once every 48 seconds	One beep every 48 seconds	Low battery

\* To enable linkage alarm function needs to ensure that the current device has been added to the Aqara Home app, and there are multiple Smoke Detectors under the same Hub.

### **Self-test**

1. In the normal working status of the detector, hold down the silence/self-test button for more than 3 seconds to confirm that the indicator flashes red, yellow and green in turn, with three beeps of the buzzer, which indicates that the self-test is normal.
2. Press and hold the button until the indicator and buzzer repeat the above sound and light signals with a pause every three seconds, and then release.
3. A monthly self-test on the detector is recommended. Contact the after-sales service immediately in case of any faults.

### **Fire alarm**

#### **1. Smoke detected**

When the detector works normally and detects that the smoke concentration is at or above the configured threshold value, the indicator keeps flashing red once per second, and the buzzer sounds loudly, with one beep per second and a pause every three beeps.

#### **2. In case of a fire**

Please take immediate and effective measures, such as using fire extinguishing facilities, calling the fire alarm.

#### **3. In case of the fire hazard eliminated**

After pressing the silence/self-test button, the buzzer will be silenced for 10 minutes, with no sound prompt during this period until the end of the silence status. During the silence, if you hold down the silence/self-test button for more than 3 seconds, the alarm sound prompt function will be restored. When the smoke concentration is below the configured threshold value, the detector will automatically return to the normal working status.

#### **4. False alarm of the detector may be triggered as a result of the following conditions**

- a. Cooking fumes or steam.
- b. Wet weather causes condensation on the detector.
- c. The application of incense or electric mosquito incense.
- d. Spraying paint, air freshener or pesticide.
- e. Massive dust accumulation inside the detector.

### **Fault**

1. In case the detector fails, the yellow indicator flashes three times continuously every 48 seconds, with continuous three beeps of the buzzer, which means that the detector is unable to detect the smoke normally. Please contact the after-sales service with the least delay possible.
2. In case the detector fails, after pressing the silence/self-test button, the buzzer will be silenced for 8 hours, with no sound prompt during this period until the end of the silence status. During the silence, if you hold down the silence/self-test button for more than 3 seconds, the fault sound prompt function will be restored.

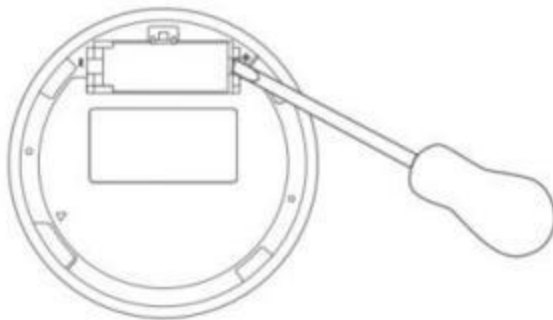
### **Low battery**

1. In case of low battery of the detector, the yellow indicator flashes once every 48 seconds, with one beep of the buzzer. Replace the battery with the least delay possible.
2. Replace the battery within 7 days to ensure the normal operation of the detector.

### **Battery replacement**

1. Hold the detector and remove it from the mounting plate by rotating it counterclockwise.
2. Remove the old battery with a screwdriver.
3. Load a new CR17450 battery in the battery compartment. Do not reverse the positive and negative electrodes of the battery.
4. After replacing the battery, hold down the silence/self-test button for more than 3 seconds to confirm that the indicator flashes red, yellow and green in turn, with three beeps of the buzzer, which indicates that the self-test is normal.
5. Align the "Δ" mark on the back of the detector with the same mark on the mounting plate, and rotate clockwise to fix it.

\* If the alarm fails to operate correctly, the advice of the manufacturer should be sought.



### **Product Specifications**

Model: SD-S01E/SD-S01D

Battery: DC 3V(CR17450)

Wireless Protocol: Zigbee

Zigbee Operating Frequency: 2405-2480 MHz

Zigbee maximum output power  $\leq 13$  dBm

Operating Temperature: 0°C ~ 40°C

Operating Humidity: 0 ~ 95% RH, no condensation

Implementation standards: EN 14604:2005/AC:2008

What is in the Box: Detector  $\times$  1, Mounting Plate  $\times$  1, Battery  $\times$  1, Accessory Kit  $\times$  1

Manufacturer: Lumi United Technology Co., Ltd.

Address: Room 801-804, Building 1, Chongwen Park, NanshanPark, No. 3370, Liuxian Avenue, Fuguang Community, Taoyuan Residential District, Nanshan District, Shenzhen, China.

Online Customer Service: [www.aqara.com/support](http://www.aqara.com/support)

<b>Faults</b>	<b>Fault diagnosis</b>	<b>Solutions</b>
Indicator remains off	Battery is not well loaded; indicator is damaged; other reasons	Recheck loading of the battery or contact after-sales service
Buzzer failure	Buzzer is damaged	Contact after-sales service
Yellow indicator flashes once every 48 seconds, with one beep of the buzzer	Low battery	Replace the battery
Yellow indicator flashes three times every 48 seconds, with three beeps of the buzzer	Detector failure	Contact after-sales service

### **Precautions**

1. If you need to carry out construction, renovation and other activities that generate a lot of dust, it is recommended that it be dismantled first to stop dust from entering the interior of the detector, resulting in massive dust accumulation, which causes continuous false alarm in the absence of fire.

2. Please do not disassemble the cover or repair the detector by yourself.

3. It is recommended that the detector cover be cleaned once a month to remove dust or dirt. To clean, use a brush or dry lint cloth to clean all sides and covers of the smoke alarm. Make sure all ventilation slots are free of debris.

\* Do not remove the cover to clean the interior.

4. This product has the function of reporting or notifying "fire alarm" via wireless network, which is affected by the installation environment of the device, the network environment and maintenance conditions of the device and the hub connected to the device, the network environment and conditions of the mobile phone used by the user, and the authorization scope and conditions of the app used by the user. The manufacturer or producer makes no warranties or promises as to the reliability and timeliness of this function.

5. The product application is at the user's own risk. In no event shall the manufacturer or producer be liable for any risk, loss, damage, compensation, liability or expense arising from or suffered as a result of any alleged malfunction of the product

(including but not limited to failure to deliver push messages, failure of automated execution, etc.) and failure to achieve its efficacy or purpose.

6. This product has the function of "silencing" the sound emitted by the device via the wireless network. When users adopt this function in various scenarios (including but not limited to mobile phone App operation, automation settings), please make sure to check the installation site of the device first to eliminate the hazard or danger of fire at the site, ensuring that it will not lead to fire, explosion and other accidents (such as false alarm of the device) due to "silencing" before operating.

#### **CAUTION**

1. Risk of explosion if the battery is replaced by an incorrect type.
2. Dispose of used batteries according to the instructions.
3. Do not ingest battery, Chemical Burn Hazard.
4. If the battery compartment does not close securely, stop using the product and keep it away from children.
5. If you think batteries might have been swallowed or placed inside any part of the body, seek immediate medical attention.
6. Disposal of a battery into fire or a hot oven, or mechanically crushing or cutting of a battery, that can result in an explosion.
7. Leaving a battery in an extremely high temperature surrounding environment that can result in an explosion or the leakage of flammable liquid or gas.
8. A battery subjected to extremely low air pressure that may result in an explosion or the leakage of flammable liquid or gas.

Scan to get the Zigbee 3.0 Install Code on the last page of the manual.

\*Please read this manual carefully and keep it in a safe place.